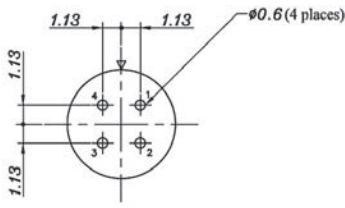
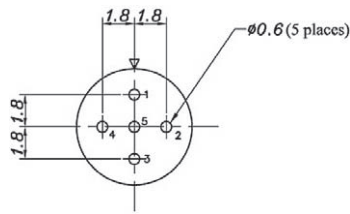


RECEPTACLE PCB HOLE LAYOUT

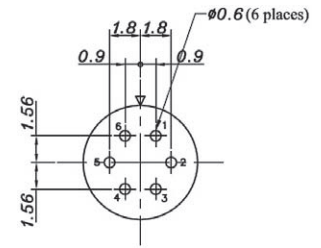
7 mm - 4pos



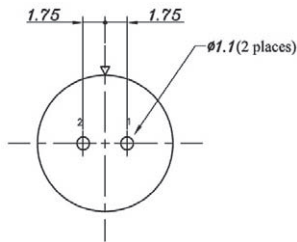
7 mm - 5pos



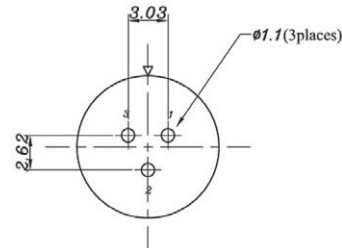
7 mm - 6pos



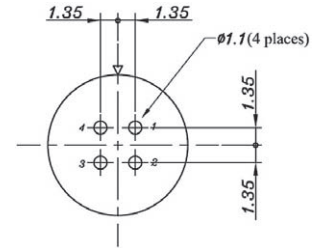
10 mm - 2pos



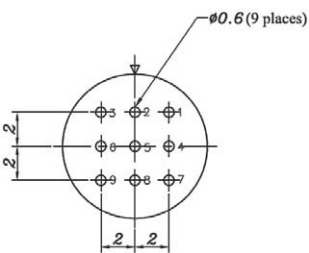
10 mm - 3pos



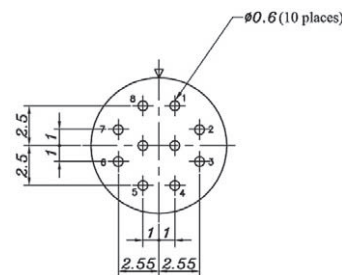
10 mm - 4pos



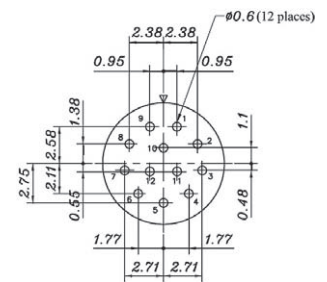
10 mm - 9pos



10 mm - 10pos

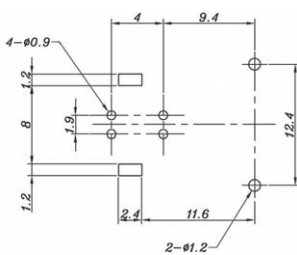


10 mm - 12pos

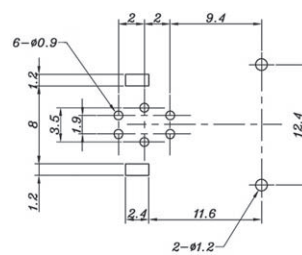


RIGHT ANGLE RECEPTACLE PCB HOLE LAYOUT

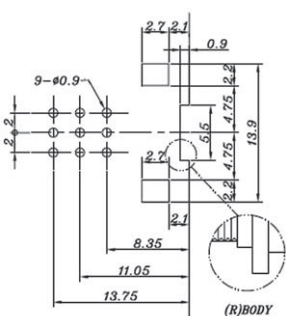
7 mm - 4pos



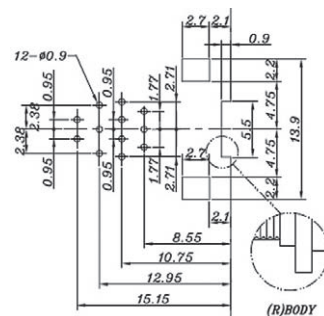
7 mm - 6pos



10 mm - 9pos

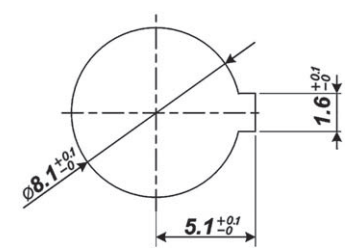


10 mm - 12pos



RECEPTACLE PANEL LAYOUT

7 mm



10 mm

